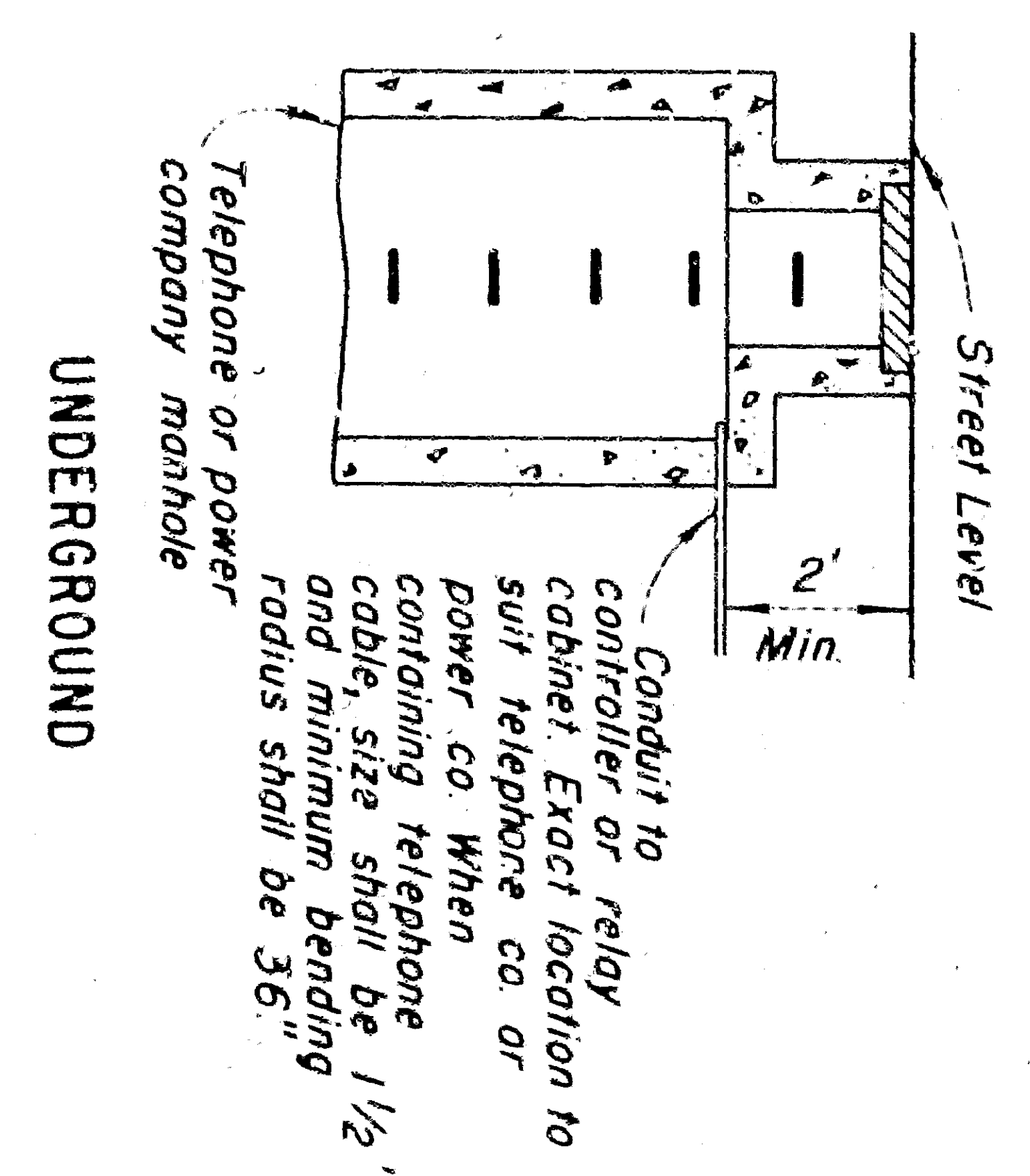
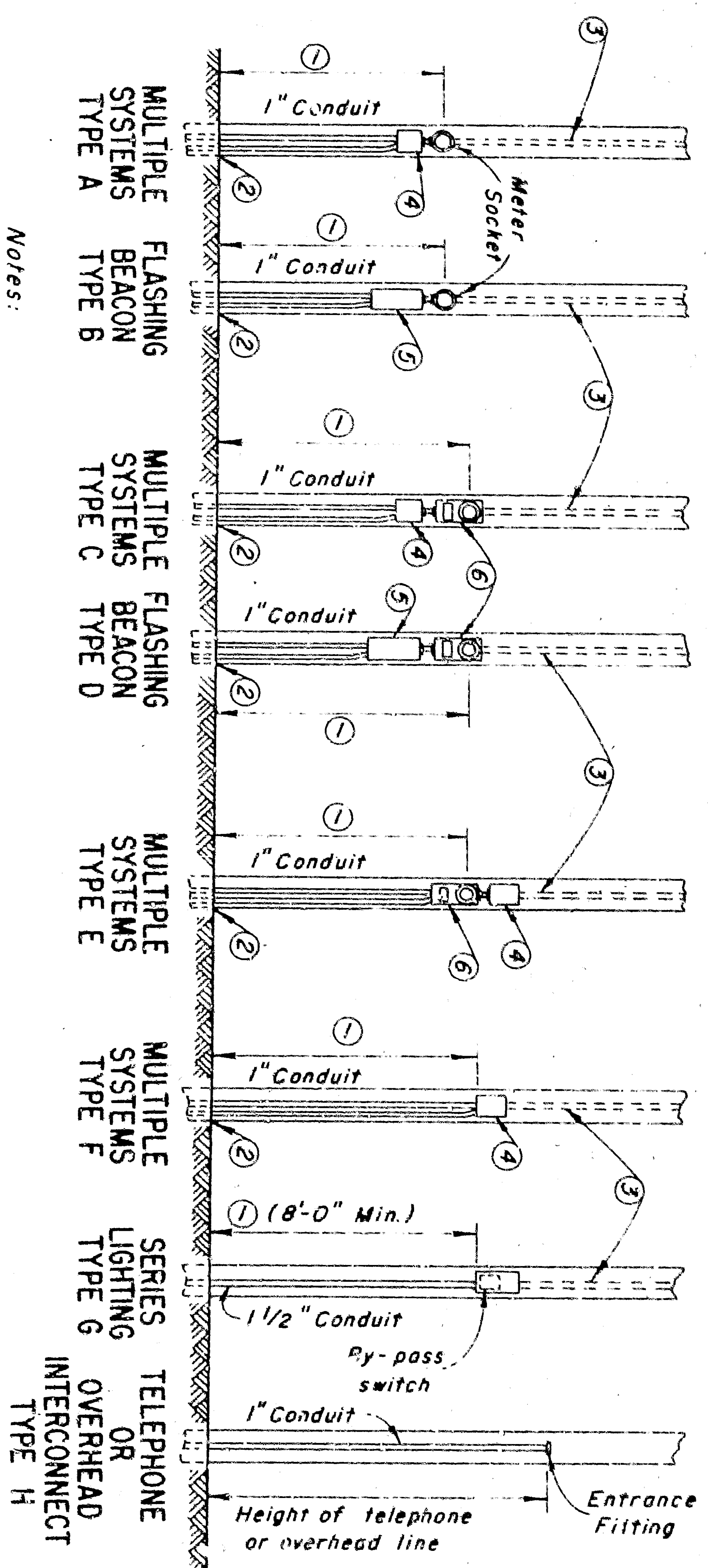


DATE	7/1/54	SCALE	AS NOTED
BY	W. J. B. / J. M. B.	CHECKED	
APPROVED	December 1962 <i>[Signature]</i> Assistant State Highway Engineer, C.E. License 3989 TO ACCOMPANY PLANS DATED		



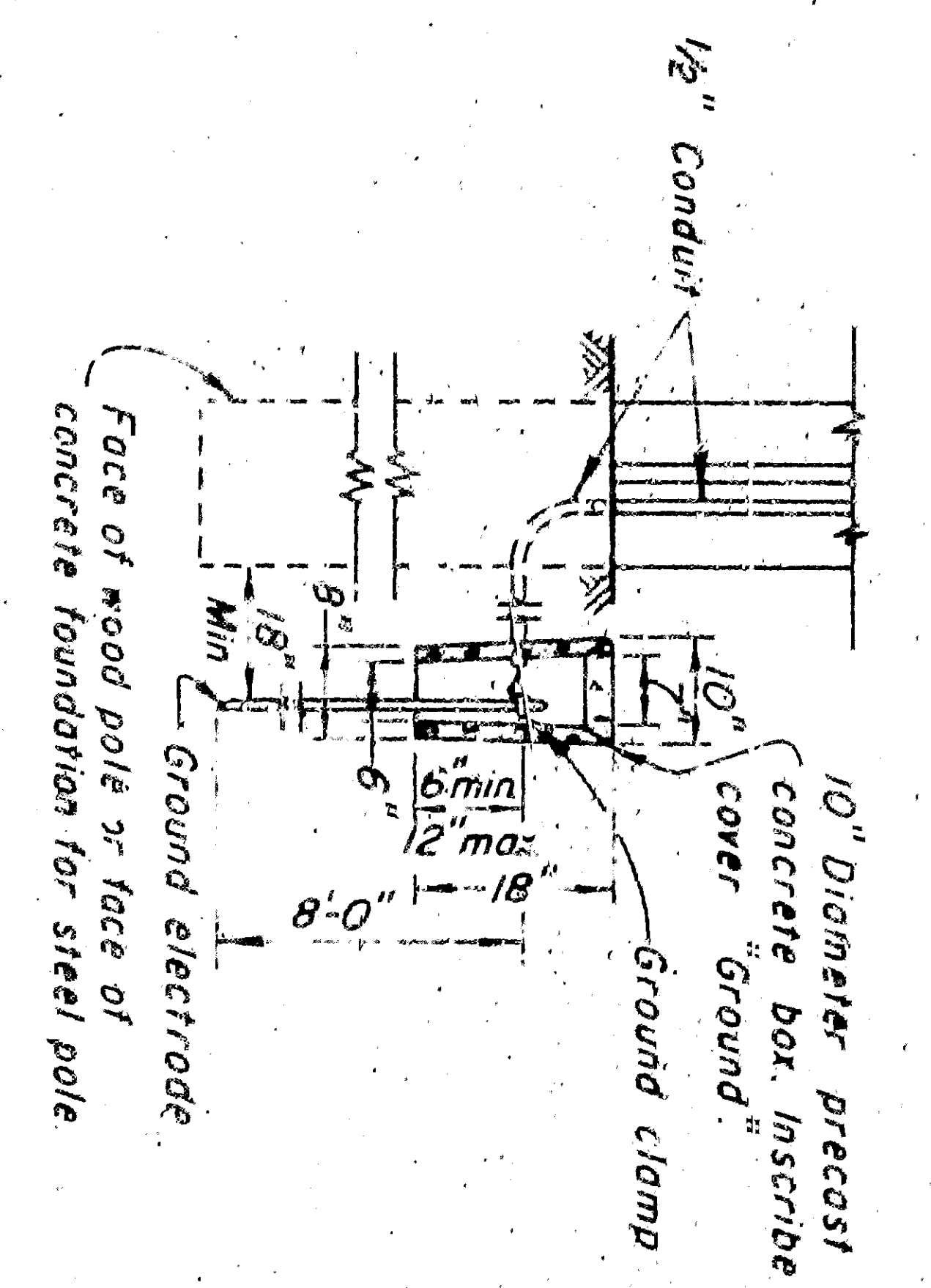
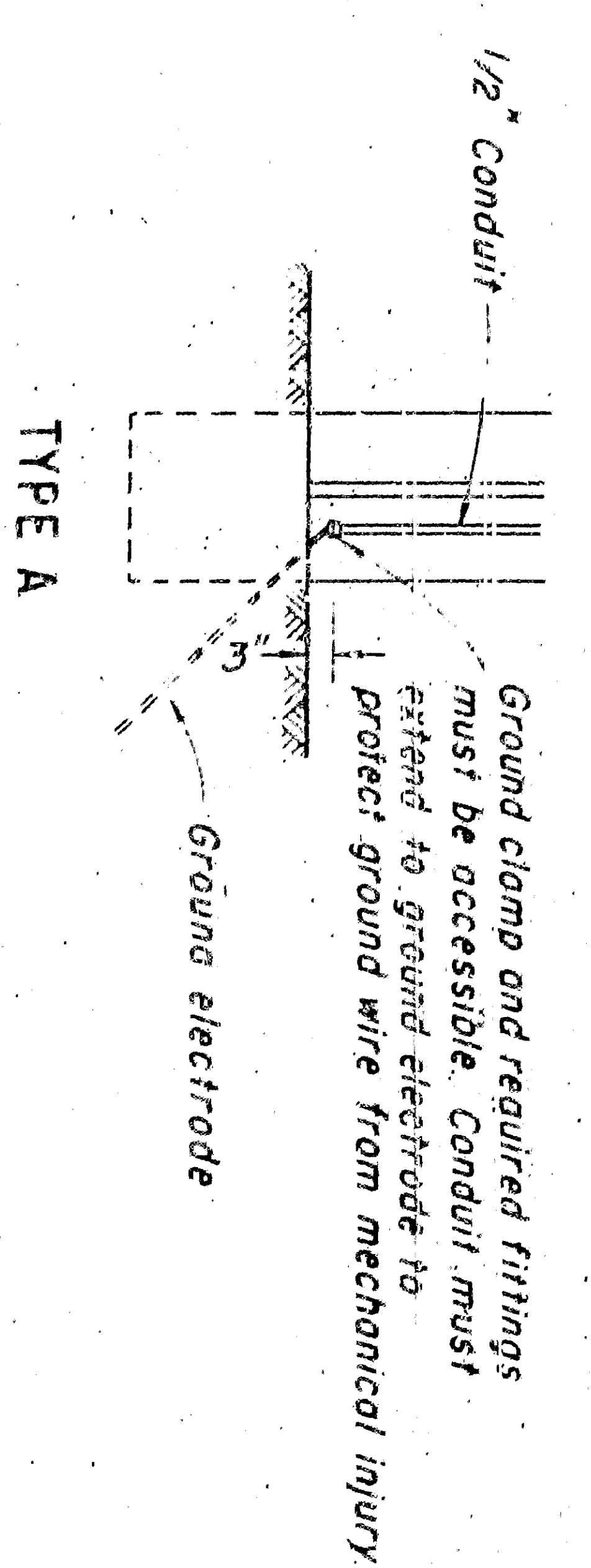
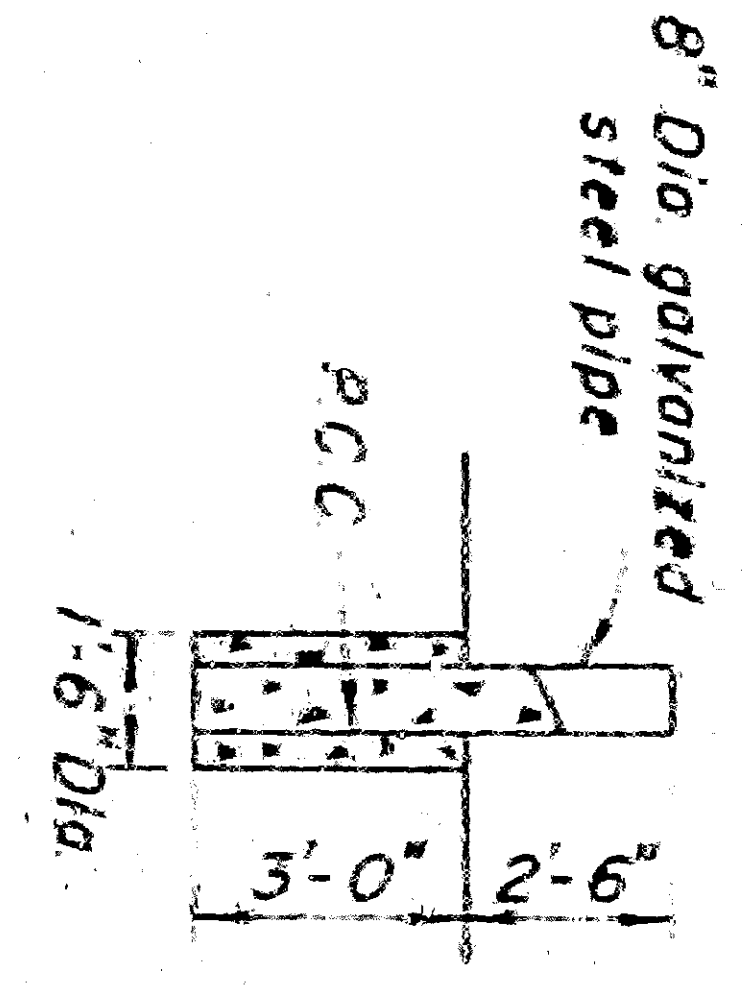
- Notes:
- ① Position of service equipment to be determined by serving utility.
 - ② See "Service Grounding" detail.
 - ③ If service pole is utility owned, service riser shall be furnished by contractor and installed by serving utility. On state owned poles, the service riser shall be furnished and installed by contractor. Service riser conduit shall be terminated with a service head or shall be sealed to prevent the entrance of water, as approved by serving utility.
 - ④ Service switch.
 - ⑤ Flashing beacon control with service switch.
 - ⑥ Meter socket box with either manual circuit closing device or space for test block as specified.

ELECTRICAL AND TELEPHONE SERVICE DETAILS

NO SCALE

GUARD POST

NO SCALE



Notes:
When water pipe is used for ground wire, it shall be encased in galvanized pipe conduit, or equivalent mechanical protection.
Rod or pipe electrodes shall be driven to a depth of at least 8 ft below surrounding ground.

SERVICE GROUNDING

NO SCALE

Project Engineer	Date
Design Engineer	Date
Approval Recommended by	Date

STATE OF CALIFORNIA DEPARTMENT OF PUBLIC WORKS DIVISION OF HIGHWAYS
STANDARD DETAILS NO. 1 TRAFFIC SIGNAL AND HIGHWAY LIGHTING INSTALLATIONS
SCALE AS NOTED
DRAWING NO. E -
Revised